

Regnum: **MYCOTA**

Divisio: **MYXOMYCOTA**

Classis: **MYXOMYCETES**

Ordo: LICEALES

*Lycogala
epidendrum*

Ordo: TRICHIALES

Arcyria sp.

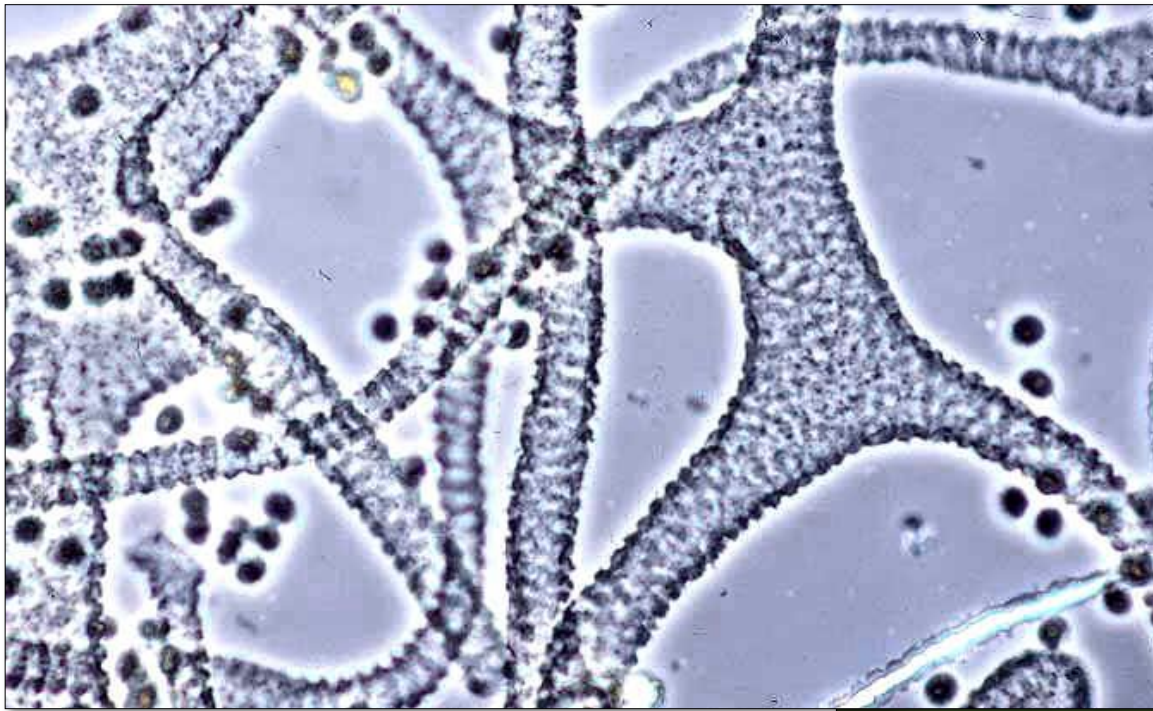
Classis: **PLASMIDIOPHOROMYCETES**

Ordo: PLASMIDIOPHORALES

*Plasmodiophora
brassicae*

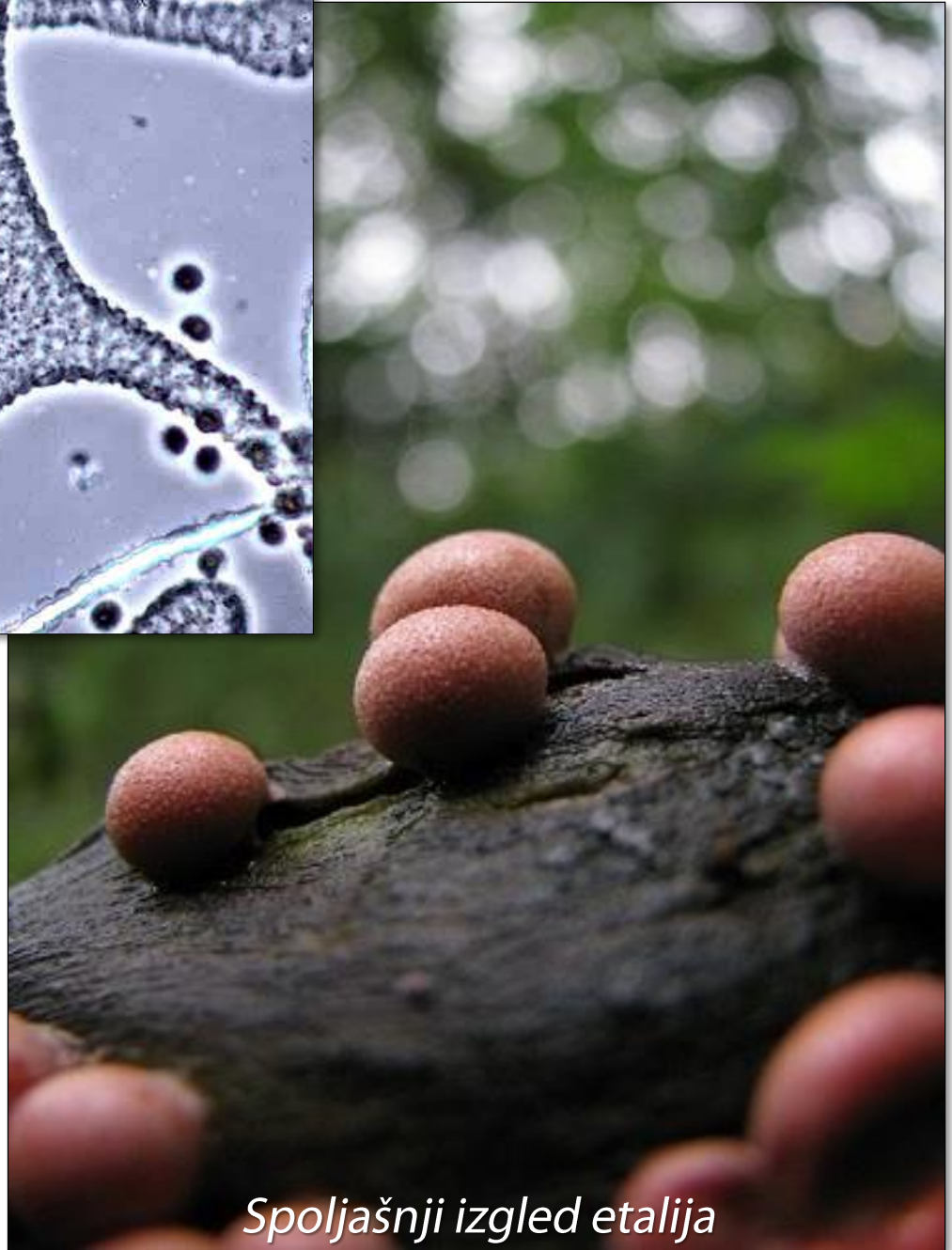
Divisio: **EUMYCOTA**

- septirana micelija
- neseptirana micelija
- presjek kroz sklerociju
- bespolne spore:
 - *jednoćelijske konidije*
 - *septirane konidije*
 - *jednoćelijske teliospore*
 - *dvoćelijske teliospore*
 - *višećelijske teliospore*
 - *uredospore*
- polne spore:
 - *zigospore*
 - *oospore*
 - *askospore*
 - *bazidiospore*

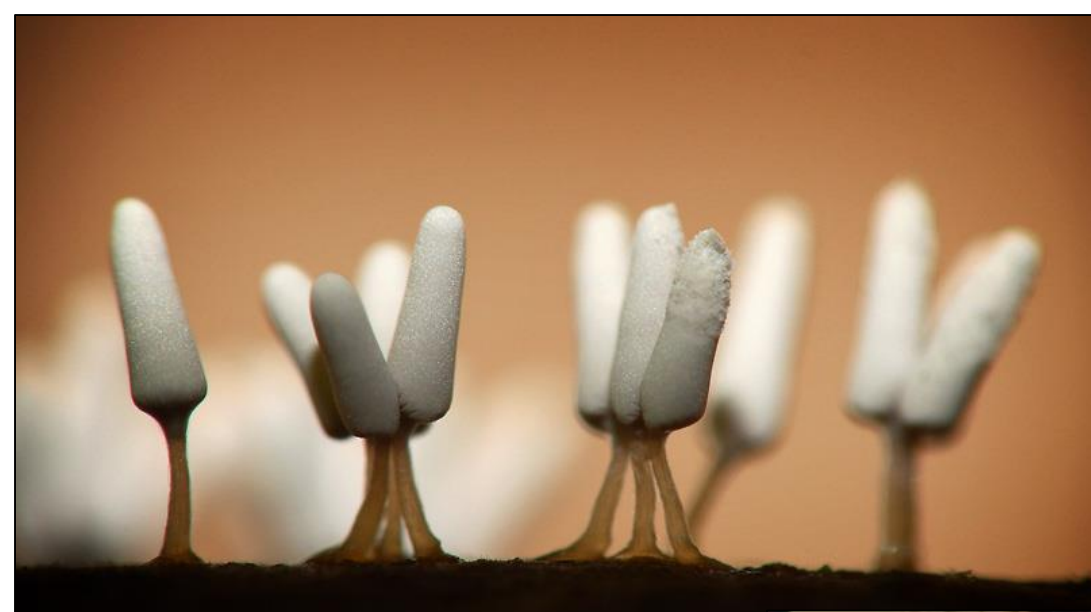


Presjek kroz centralni dio etalije

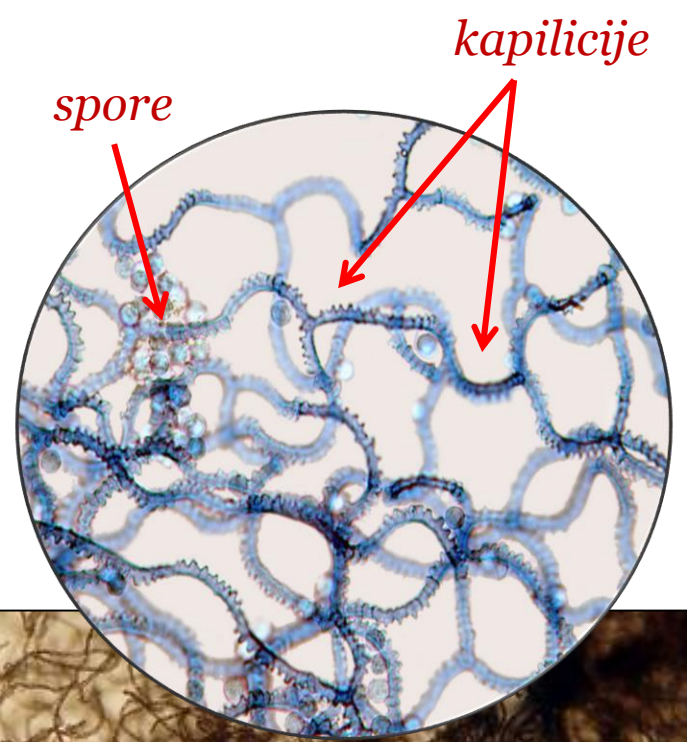
Lycogala epidendrum



Spoljašnji izgled etalija

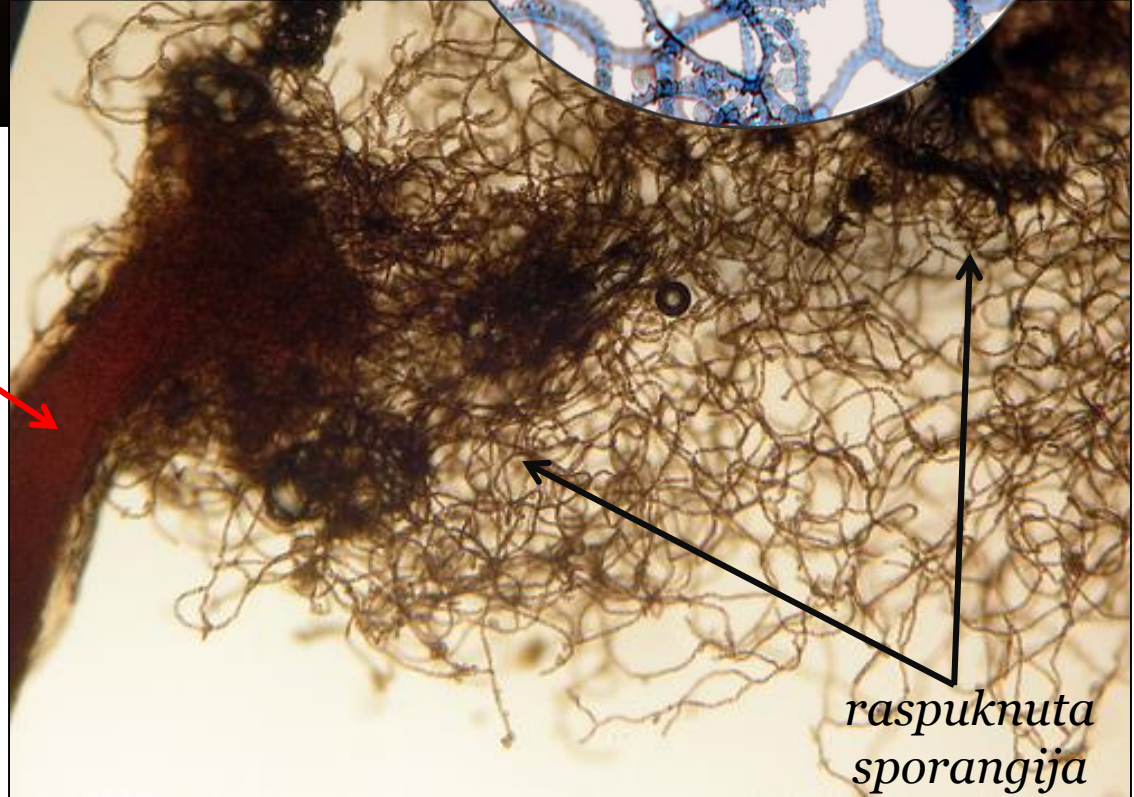


Spoljašnji izgled sporangija



spore

kapilicije

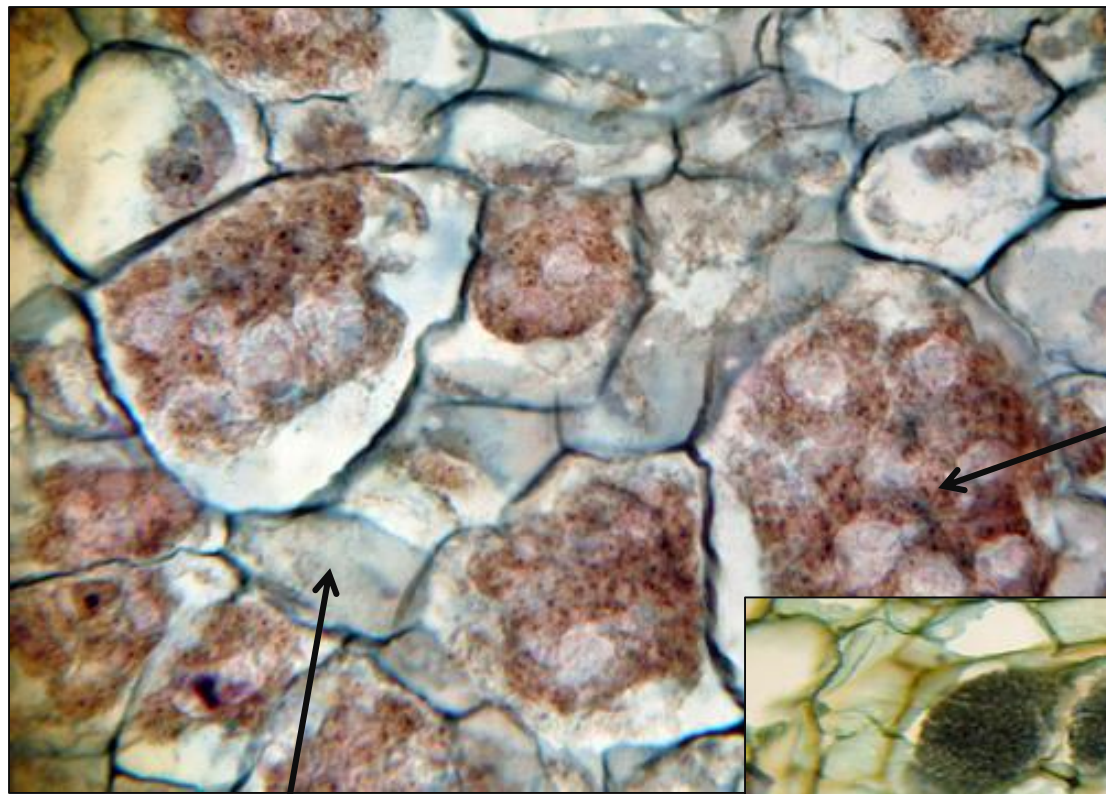


sporangiofor

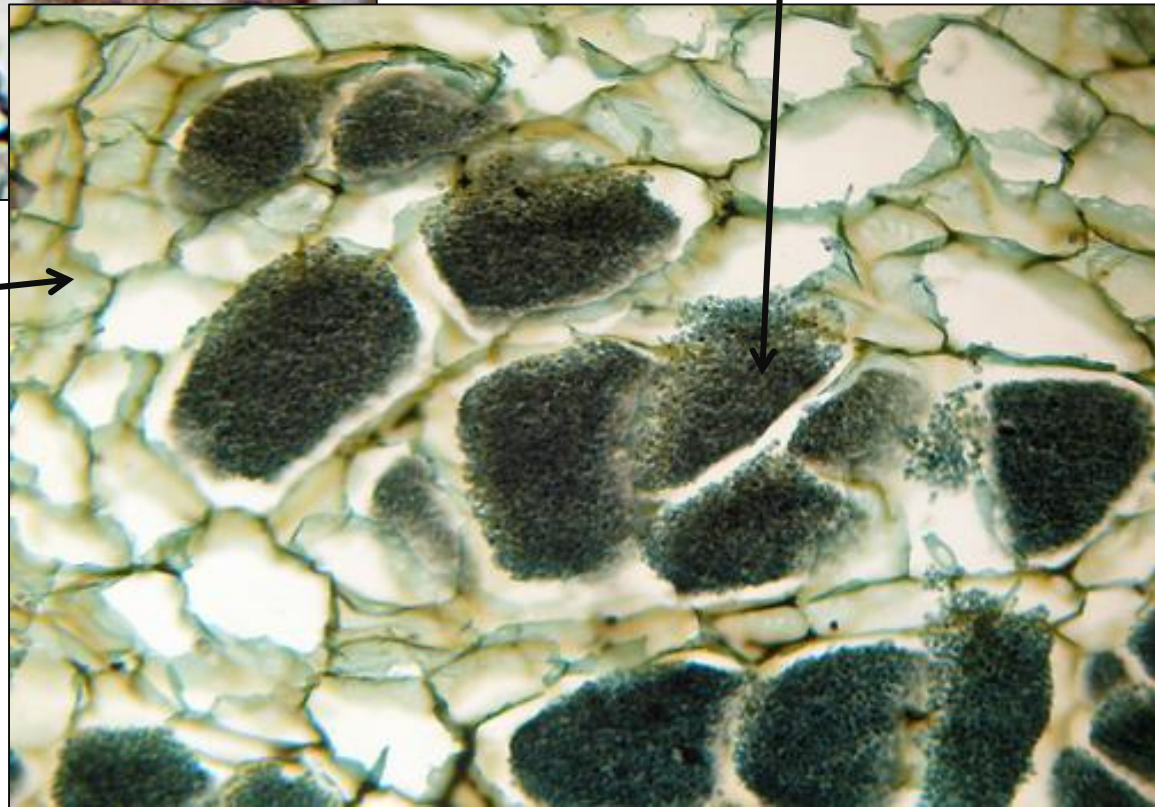
raspuknuta sporangija

Arcyria spp.

*džinovske biljne ćelije sa
sporama i plazmodijumom
parazita*



*zdrave biljne ćelije
normalnih dimenzija*



*Plasmodiophora
brassicae*



septirana micelija



neseptirana (cenocitična) micelija

sklerocija,
makroskopski
izgled



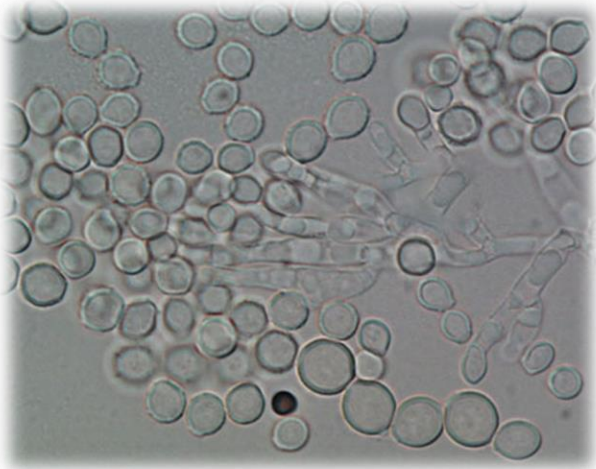
srž od
tankozidnih hifa

kora od
debelozidnih hifa

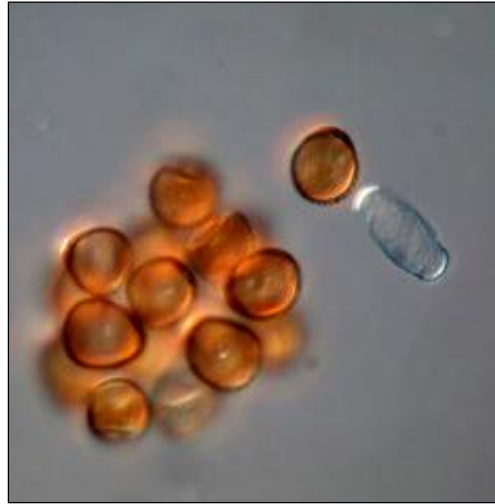


presjek kroz sklerociju

BESPOLNE SPORE



1-ćelijske konidije



uredospore



septirane konidije



1-ćelijske teliospore

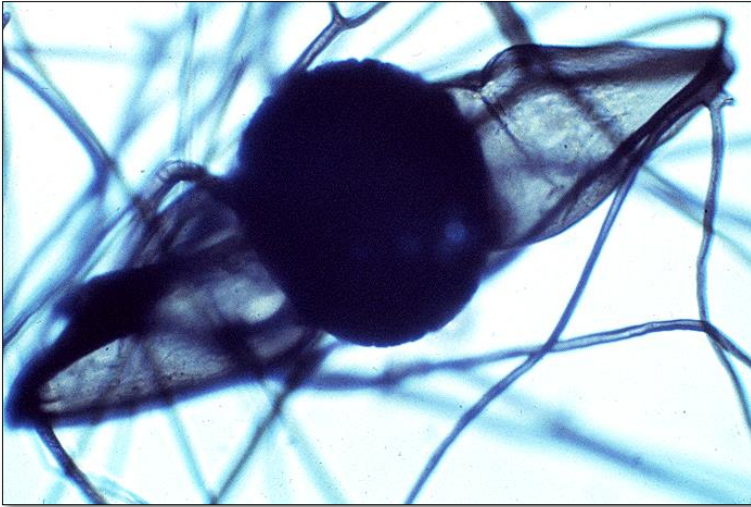


višećelijske teliospore

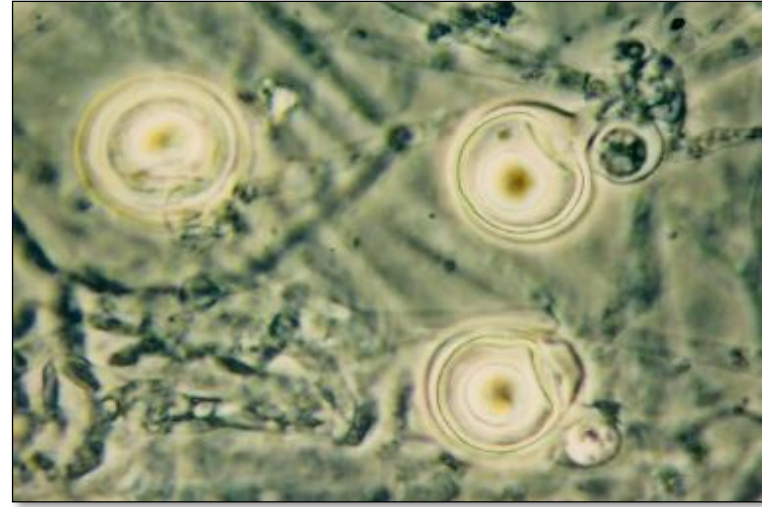


2-ćelijske teliospore

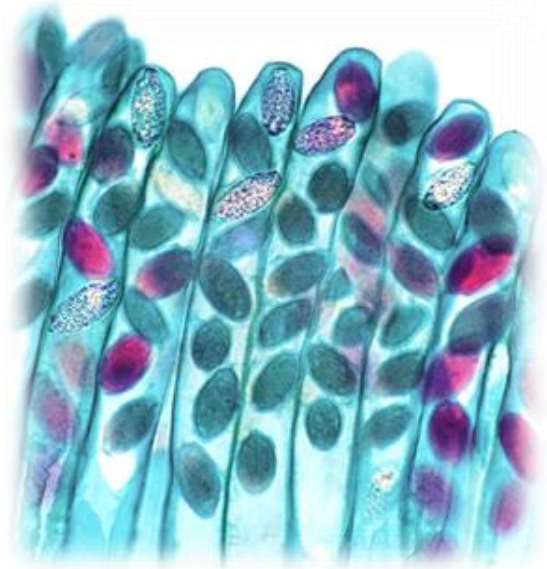
POLNE SPORE



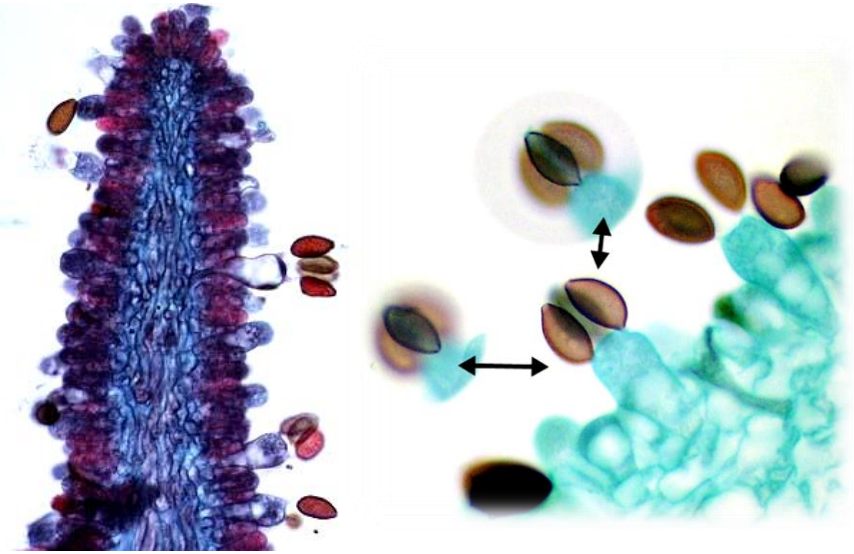
zigospora



oospore



askusi sa askosporama



bazidije sa bazidiosporama